

Setting up Akai MPD or MPK controllers with Reason

This guide will walk you through setting up your Akai MPD or MPK USB MIDI controller with Propeller Heads' Reason software.

Contents:

Installing the Controller Preset Files	2
Windows XP	2
Windows Vista	3
Macintosh	4
Setting Up MIDI Beat Clock Sync.....	5
Settings On The MPD or MPK controller.....	5
Settings in Reason 4.....	6
Settings in Reason 3.04 or 3.05	8

Installing the Controller Preset Files

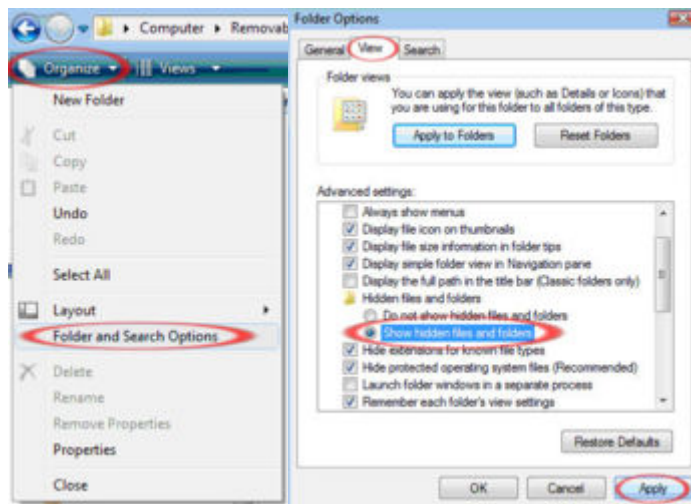
- Both PC and Mac *must* have Reason version **3.04 or later** installed in order to use the included **Akai Reason Remote Files** and for the playback controls to work with Reason.
- **Note:** the latest version of Reason will have most or all Akai MIDI Controller preset files pre-installed. If you have the latest Reason version installed, or can update to it, the installation described in this guide may not be necessary!

Windows XP

1. The **Akai Reason Remote Files** folder (the same folder where you found this guide) contains two folders: **Lua Codecs** and **Maps**. Open the **Lua Codecs** folder.
2. Copy the folder titled **Akai** into the following directory on your computer:
C:\Documents and settings\All Users\Application Data\Propellerhead Software\Remote\Codecs\Lua Codecs
3. Next, in the **Akai Reason Remote Files** folder, open the folder titled **Maps**
4. Copy the **Akai** folder to the following directory on your computer:
C:\Documents and settings\All Users\Application Data\Propellerhead Software\Remote\Maps
5. Open Reason and select the **Edit** menu from the top of the screen, and open **Preferences**.
6. Using the pull-down menu at the top of the Preferences window, choose **Control Surfaces And Keyboards**.
7. Click the **Add** button.
8. Select **Akai** from the Manufacturer list.
9. Set the **In Port** to **USB Audio Device**
10. Set the **Out Port** to **USB Audio Device [2]**
11. Click **Ok** and then close the **Preferences** window. You're all set!

Windows Vista

1. Double-click the **Computer** icon on the desktop, then double-click **Local Disk (C:)**.
2. Towards the upper-left of the window, select the **Organize** menu, and choose **Folder and Search Options** (see below).
3. At the top of the window that opens, select the **View** tab.
4. In the list titled **Advanced settings** double-click the **Show hidden files and folders** option (see below).
5. Click **Apply**, then click **OK**. The **Folder Options** window will close.



6. The **Akai Reason Remote Files** folder (the same folder where you found this guide) contains two folders: **Lua Codecs** and **Maps**. Open the **Lua Codecs** folder.
7. Copy the folder titled **Akai** into the following directory on your computer: **C:\Program Data\Propellerhead Software\Remote\Codecs\Lua Codecs**
8. Next, in the **Akai Reason Remote Files** folder, open the folder titled **Maps**
9. Copy the **Akai** folder to the following directory on your computer: **C:\Program Data\Propellerhead Software\Remote\Maps**
10. Open Reason and select the **Edit** menu from the top of the screen, and open **Preferences**.
11. Using the pull-down menu at the top of the Preferences window, choose **Control Surfaces And Keyboards**.
12. Click the **Add** button.
13. Select **Akai** from the Manufacturer list.
14. Set the **In Port** to **USB Audio Device**
15. Set the **Out Port** to **USB Audio Device [2]**
16. Click **Ok** and then close the **Preferences** window. You're all set!

Macintosh

1. The **Akai Reason Remote Files** folder (the same folder where you found this guide) contains two folders: **Lua Codecs** and **Maps**. Open the **Lua Codecs** folder.
2. Copy the folder titled **Akai** into the following directory on your computer:
Macintosh HD\Library\Application Support\Propellerhead Software\Remote\CODECS\LUA CODECS
3. Next, in the **Akai Reason Remote Files** folder, open the folder titled **Maps**
4. Copy the **Akai** folder to the following directory on your computer:
Macintosh HD\Library\Application Support\Propellerhead Software\Remote\Maps
5. Open Reason and select the **Edit** menu from the top of the screen, and open **Preferences**.
6. Using the pull-down menu at the top of the Preferences window, choose **Control Surfaces And Keyboards**.
7. Click the **Add** button.
8. Select **Akai** from the Manufacturer list.
9. Set the **In Port** to **Akai MPK49 Port 1** or **Akai MPD32 Port 1**
10. Set the **Out Port** to **Akai MPK49 Port 2** or **Akai MPD32 Port 2**
11. Click **Ok** and then close the **Preferences** window. You're all set!

Setting Up MIDI Beat Clock Sync

In order to use the MPD or MPK controller's **Note Repeat** and **Arpeggiator** functions successfully with Reason, the controller and Reason need to share the same tempo. The MPD or MPK controller can be set up to transmit MIDI Beat Clock, and Reason can be set up to sync to the incoming clock. To do this, perform the following:

Settings On The MPD or MPK controller

1. Press the **PRESET** button on the MPD or MPK controller.
2. Rotate the **Value Knob** (located just to the right of the display) until the display reads **Reason**
3. Press the **Value Knob** down (like a button) to confirm your preset selection.
4. Press the **EDIT** button on the MPD or MPK controller.
5. Press the **PLAY** button on the MPD or MPK controller.
6. Press the **Value Knob** down (like a button) to access *edit* mode for the transport controls.
7. Rotate the **Value Knob** until the display reads **MMC/MIDI**.
8. Press the **Value Knob** down (like a button) to confirm your preset selection.
9. Check to see that the **TAP TEMPO** light on the MPD or MPK controller is blinking. If it is, skip to the **Settings in Reason** section below. If the **TAP TEMPO** light is *not* blinking, perform the following:
 1. Press the **GLOBAL** button on the MPD or MPK controller.
 2. Repeatedly press the **>** button (located underneath the **Value Knob**) until the display reads **MIDI CLK** (page 8).
 3. Rotate the **Value Knob** until the display reads **INTERNAL**.
 4. Repeatedly press the **>** button (located underneath the **Value Knob**) until the display reads **SAVE SETUP** (page 10).
 5. Press the **Value Knob** down (like a button) to save your Global settings.

Settings in Reason 4

Windows:

1. In Reason, select the **Edit** menu at the top of the screen, and choose **Preferences**.
2. At the top of the window that opens, select **Advanced Control** from the drop-down menu.
3. In the **Advanced Control** screen, next to **MIDI Clock Sync** select **Akai MPK Port 1** or **Akai MPD Port 1** from the drop-down menu.
4. Click the red **X** in the upper-right of the window to close the **Preferences** window.
5. Select the **Options** menu from the top of the screen in Reason, then select **Sync**, and choose **MIDI Clock**. This step will switch Reason from using its own internal clock/tempo, to using the incoming clock/tempo information from the controller.

Reason's tempo will now be controlled via the tap-tempo button on the controller. Since the two will share the same tempo, **Note Repeat** and **Arpeggiator** functions will sync up with any open Reason project. While Reason is synced to the controller's MIDI Beat Clock, all transport (Play, Stop, Rec etc.) is controlled with the buttons on the controller itself. In this mode you cannot control the software by clicking the transport controls on the screen in Reason.

Note: If, at any point, you would like to switch Reason back to its internal clock, select the **Options** menu from the top of the screen, then select **Sync**, and choose **Internal**.

Macintosh:

1. In Reason, select the **Reason** menu at the top of the screen, and choose **Preferences**.
2. At the top of the window that opens, select **Advanced Control** from the drop-down menu.
3. In the **Advanced Control** screen, next to **MIDI Clock Sync** select **Akai MPK Port 1** or **Akai MPD Port 1** from the drop-down menu.
4. Click the red **X** in the upper-left of the window to close the **Preferences** window.
5. Select the **Options** menu from the top of the screen in Reason, then select **Sync**, and choose **MIDI Clock**. This step will switch Reason from using its own internal clock/tempo, to using the incoming clock/tempo information from the controller.

Reason's tempo will now be controlled via the tap-tempo button on the controller. Since the two will share the same tempo, **Note Repeat** and **Arpeggiator** functions will sync up with any open Reason project. While Reason is synched to the MPK or MPD controller's MIDI Beat Clock, all transport (Play, Stop, Rec etc.) is controlled with the buttons on the MPK or MPD controller itself. In this mode you cannot control the software by clicking the transport controls on the screen in Reason.

Note: If, at any point, you would like to switch Reason back to it's internal clock, select the **Options** menu from the top of the screen, then select **Sync**, and choose **Internal**.

Settings in Reason 3.04 or 3.05

Windows:

1. In Reason, select the **Edit** menu at the top of the screen, and choose **Preferences**.
2. At the top of the window that opens, select **Advanced MIDI** from the drop-down menu.
3. In the **Advanced MIDI** screen, next to **MIDI Clock Sync** select **Akai MPK or MPD Port 1** from the drop-down menu.
4. Click the red **X** in the upper-right of the window to close the **Preferences** window.
5. Towards the bottom-left of the main Reason window, just to the right of the **CPU** meter, is a section with the heading **MIDI Sync**. Underneath **MIDI Sync** click the button titled **Enabled** (so that it is lit). This step will switch Reason from using its own internal clock/tempo, to using the incoming clock/tempo information from the MPK49.

Reason's tempo will now be controlled via the tap-tempo button on the MPK49. Since the two will share the same tempo, **Note Repeat** and **Arpeggiator** functions will sync up with any open Reason project. While Reason is synched to the MPK or MPD controller's MIDI Beat Clock, all transport (Play, Stop, Rec etc.) is controlled with the buttons on the MPK or MPD controller itself. In this mode you cannot control the software by clicking the transport controls on the screen in Reason.

Note: If, at any point, you would like to switch Reason back to its internal clock, click the **Enable** button at the bottom-right of the screen again, so that it is disabled (not lit).

Macintosh:

1. In Reason, select the **Reason** menu at the top of the screen, and choose **Preferences**.
2. At the top of the window that opens, select **Advanced MIDI** from the drop-down menu.
3. In the **Advanced MIDI** screen, next to **MIDI Clock Sync** select **Akai MPK49 Port 1** from the drop-down menu.
4. Click the red **X** in the upper-left of the window to close the **Preferences** window.
5. Towards the bottom-left of the main Reason window, just to the right of the **CPU** meter, is a section with the heading **MIDI Sync**. Underneath **MIDI Sync** click the button titled **Enabled** (so that it is lit). This step will switch Reason from using its own internal clock/tempo, to using the incoming clock/tempo information from the MPK or MPD controller.

Reason's tempo will now be controlled via the tap-tempo button on the MPK49. Since the two will share the same tempo, **Note Repeat** and **Arpeggiator** functions will sync up with any open Reason project. While Reason is synched to the MPK or MPD controller's MIDI Beat Clock, all transport (Play, Stop, Rec etc.) is controlled with the buttons on the MPK or MPD controller itself. In this mode you cannot control the software by clicking the transport controls on the screen in Reason.

Note: If, at any point, you would like to switch Reason back to its internal clock, click the **Enable** button at the bottom-right of the screen again, so that it is disabled (not lit).